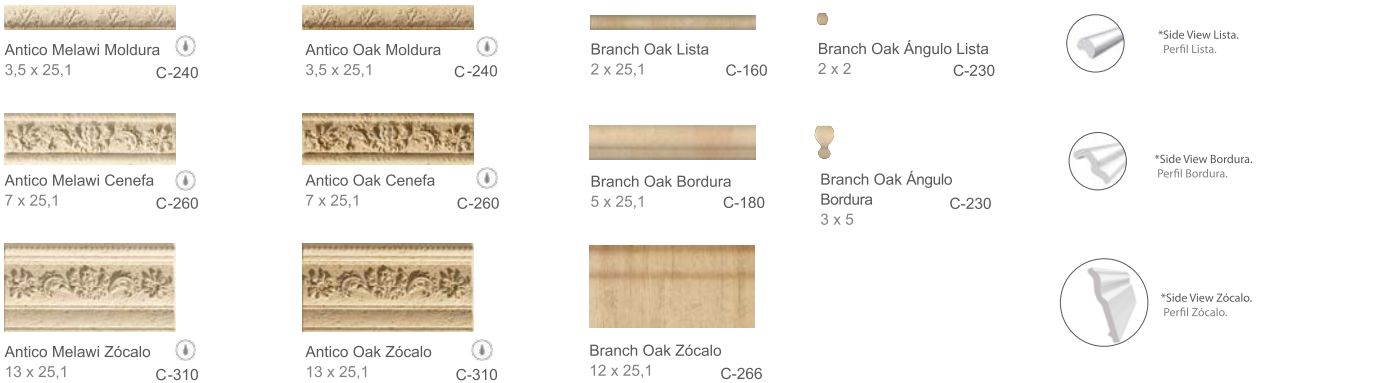


# Branch

25,1x75,6  
9.9"x29.76"



Branch Melawi 25,1 x 75,6 C-550  
 Branch Oak 25,1 x 75,6 C-550  
 Branch Oak Reale 25,1 x 75,6 C-550  
 Reale Gold 25,1 x 75,6 C-357  
 Reale Silver 25,1 x 75,6 C-357



Special product: Due to hand-manufactured process the caliber and tonality of these borders could vary from one to other. Clean only using neutral PH products.  
 Producto especial: Este material se fabrica artesanalmente, por lo que pueden existir pequeñas variaciones en el calibre o en el tono. Usar para la limpieza únicamente productos con PH neutro.

PVD application. More information on page 146.  
 Aplicación PVD. Más información en página 146.

## Matching floor tiles

15,7x59,2 | 6.18"x23.3" 24,9x100 | 9.8"x39.37"

**Class 3** NonSlip Finish \*  
**Class 1** Natural Finish \*



Branch Maple Natural 15,7 x 59,2 24,9 x 100 G-3142 G-3154  
 Branch Maple Non-Slip 15,7 x 59,2 24,9 x 100 G-3170 G-3178  
 Branch Oak Natural 15,7 x 59,2 24,9 x 100 G-3142 G-3154  
 Branch Oak Non-Slip 15,7 x 59,2 24,9 x 100 G-3170 G-3178  
 Branch Teka Natural 15,7 x 59,2 24,9 x 100 G-3142 G-3154  
 Branch Teka Non-Slip 15,7 x 59,2 24,9 x 100 G-3170 G-3178  
 Branch Walnut Natural 15,7 x 59,2 24,9 x 100 G-3142 G-3154  
 Branch Walnut Non-Slip 15,7 x 59,2 24,9 x 100 G-3170 G-3178

Series	Format&Thickness	Unit	Boxes/Pallet	m <sup>2</sup> /Pallet	m <sup>2</sup> /Box	Pieces/Box	Kg/Pallet	Kg/Box
Branch	25'1x75'6	m <sup>2</sup>	45	59,85	1,330	7	1144,04	25,11
Branch Reale	25'1x75'6	m <sup>2</sup>	45	59,85	1,330	7	1060,11	23,25
Reale Gold/Silver	25'1x75'6	pz	13	19,73	1,518	8	391,96	29,07
Branch Ang-Bord	5x3	pz	240	6,48	0,027	18	256,16	1,01
Branch Ang-Lista	2x2	pz	240	2,40	0,010	25	136,88	0,51
Branch Bord	5x25'1	pz	48	15,65	0,326	26	325,62	6,49
Branch Lista	2x25'1	pz	64	14,45	0,226	45	360,75	5,41
Antico Cf	7x25	pz	64	11,26	0,176	10	301,87	4,49
Antico Mold	3'5x25'1	pz	64	11,26	0,176	20	334,51	5,01
Antico Zocalo	13x25'1	pz	36	17,64	0,490	15	500,18	13,51
Branch Natural	15'7x59'2	m <sup>2</sup>	36	36,79	1,022	11	765,43	20,87
Branch Natural	24,9x100	m <sup>2</sup>	36	44,820	1,245	5	1024	28,06

